

COBBLECREEK PARK SUBDIVISION - PHASE I

TAXING UNIT: 106

WEBER COUNTY

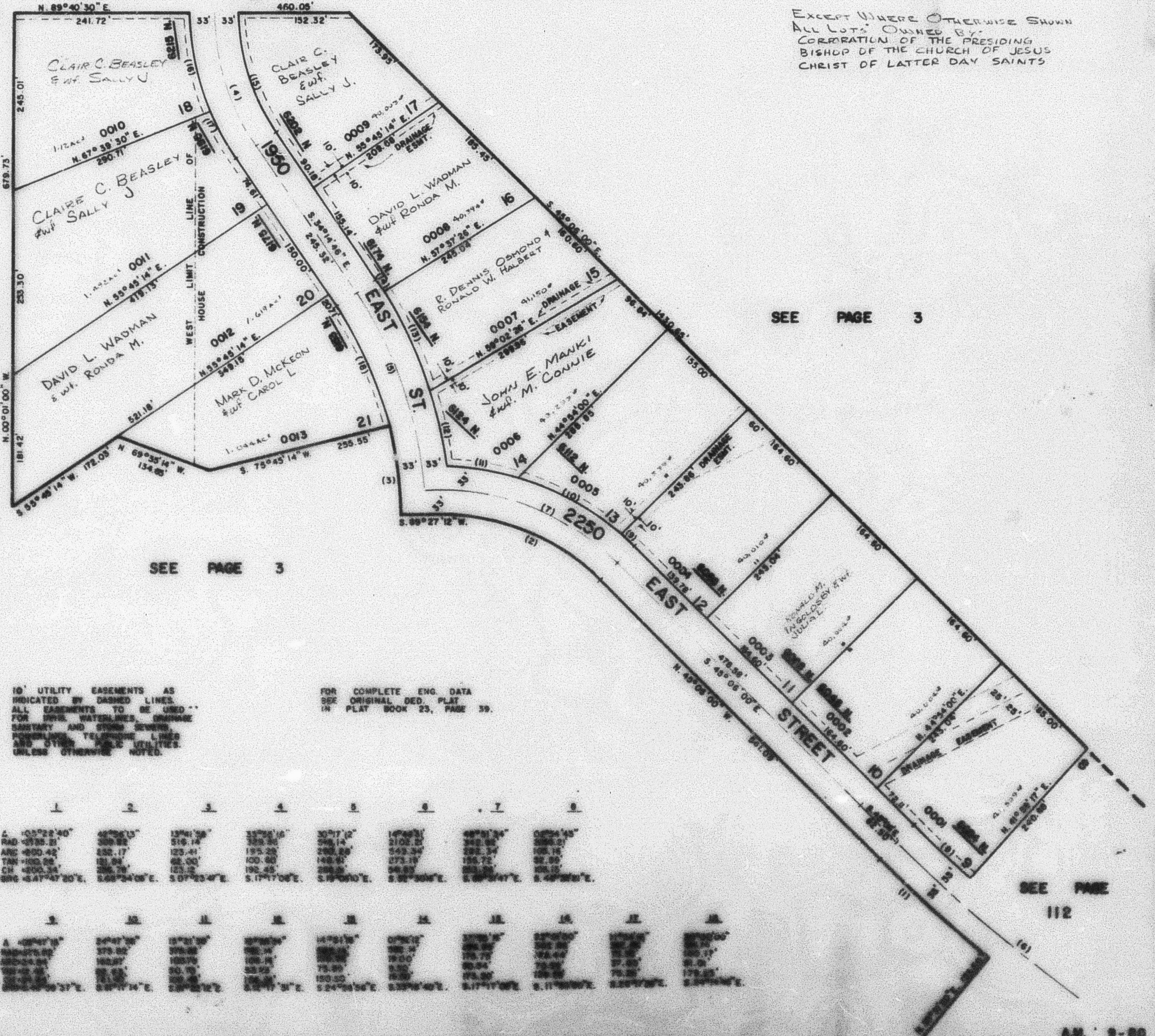
PREFIX: 16-113

SEE PAGE 3

LOTS 9-21

6225 NORTH STREET

SCALE 1" = 100'



EXCEPT WHERE OTHERWISE SHOWN
 ALL LOTS OWNED BY
 CORPORATION OF THE PRESIDING
 BISHOP OF THE CHURCH OF JESUS
 CHRIST OF LATTER DAY SAINTS

SEE PAGE 3

SEE PAGE 3

10' UTILITY EASEMENTS AS
 INDICATED BY DASHED LINES.
 ALL EASEMENTS TO BE USED
 FOR FIRE, WATERLINES, DRAINAGE,
 SANITARY AND STORM SEWERS,
 POWERLINES, TELEPHONE LINES
 AND OTHER PUBLIC UTILITIES
 UNLESS OTHERWISE NOTED.

FOR COMPLETE ENG. DATA
 SEE ORIGINAL DEED. PLAT
 IN PLAT BOOK 23, PAGE 39.

1	2	3	4	5	6	7	8
100°22'40"	45°25'13"	13°41'38"	33°25'16"	30°17'12"	14°49'51"	48°21'34"	02°24'45"
428.21	288.82	519.14	325.36	298.14	2102.2	248.92	288.21
ARC 400.42	232.17	123.41	195.25	282.89	543.34	282.37	108.18
TAN 400.26	181.84	68.00	100.60	148.61	273.19	136.72	82.80
CH 400.34	286.78	123.32	192.45	288.21	543.34	282.37	108.18
BRC 45.47°47'20"E.	5.48°24'06"E.	5.07°33'4"E.	5.17°17'0"E.	5.19°00'0"E.	5.25°30'4"E.	5.28°34'7"E.	5.48°24'0"E.
1	11	11	11	11	11	11	11
100°22'40"	24°47'36"	18°21'36"	32°26'36"	14°21'36"	07°21'36"	37°26'36"	27°26'36"
428.21	379.82	398.82	108.14	108.14	108.14	108.14	108.14
ARC 400.42	181.84	181.84	108.14	108.14	108.14	108.14	108.14
TAN 400.26	80.92	80.92	54.07	54.07	54.07	54.07	54.07
CH 400.34	286.78	286.78	108.14	108.14	108.14	108.14	108.14
BRC 45.47°47'20"E.	5.48°24'06"E.	5.07°33'4"E.	5.24°24'06"E.	5.24°24'06"E.	5.24°24'06"E.	5.24°24'06"E.	5.24°24'06"E.

SEE PAGE 112